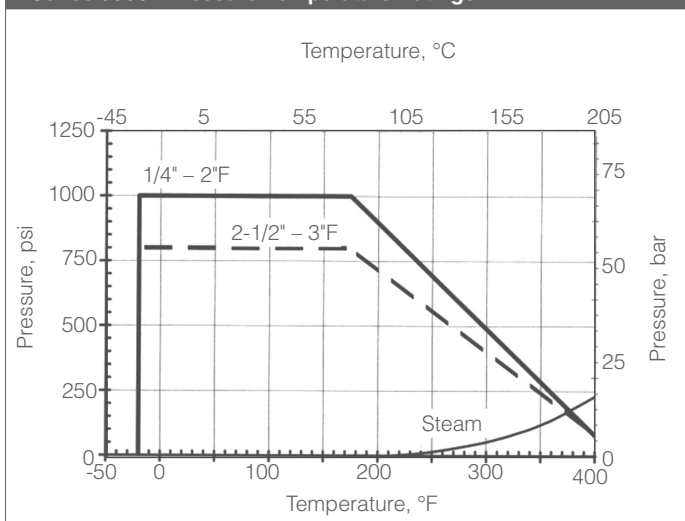




Features

- Investment cast body construction
- Blow-out proof stem
- Reinforced PTFE seats
- Adjustable PTFE packing
- API 598 Inspection & Testing
- PED 2014/68/EU Capable (1.25 NPS and larger sizes on Special Order)
- Locking lever operator w/mounting pad

Series 9000F Pressure-Temperature Ratings



Technical Specifications

Valve Size Inches	Operating Torque, in-lb	Flow Coefficient, Cv
1/4"	50	10
3/8"	50	10
1/2"	85	12
3/4"	140	35
1"	180	60
1-1/4"	235	100
1-1/2"	300	150
2"	330	250
2-1/2"	850	400
3"	1200	600

9923FTRS-XXX Series Full Port Valve 9933FTRS-XXX Series Full Port Valve

Quick Spec	
Product Scope	
Size Range	1/4" – 3", Full Port
Body Type	2-pc, End Entry, FNPT Ends
Pressure Rating	<=2": 1000 psi WOG (69 bar) >=2-1/2": 800 psi WOG (55 bar)
Temperature Range / WSP	-20°F thru 350°F / 150 psi Steam -29°C thru 177°C / 10,3 bar Steam
Body	Carbon or Stainless Steel
Trim	Stainless Steel, Anti-Static Design
Seats	RPTFE
Stem Packing	Adjustable PTFE
Operator/Mtg Pad	Manual Locking Lever / non-ISO
Design Standards	
Thread Design	ASME B1.20.1
Testing Standards	
Pressure Testing	API 598

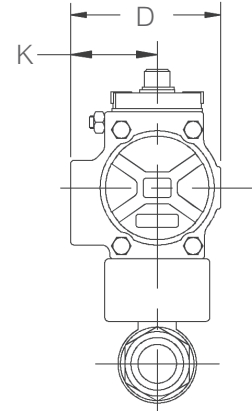
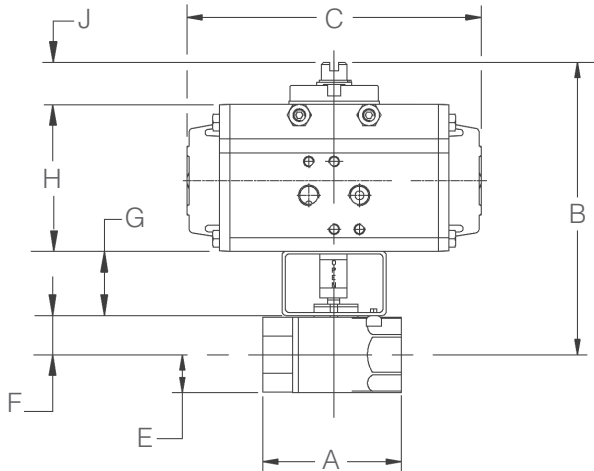
Materials of Construction

Part	Material (Carbon Steel)	Material (Stainless Steel)
Body	ASTM A216 Gr WCB	ASTM A276 Gr CF8M
End Cap	ASTM A216 Gr WCB	ASTM A276 Gr CF8M
Ball	ASTM A216 Gr WCB	ASTM A276 Gr CF8M
Stem	ASTM A276 F316	
Seal, Body	PTFE	
Seat	RPTFE	
Thrust Washer, Stem	RPTFE	
Packing, Stem	PTFE	
Gland Nut, Body	304 SS	
Washer, Handle	304 SS	
Handle	304 SS	
Cover, Handle	Vinyl	
Nut, Handle	304 SS	

Technical Specifications, metric

Valve Size NPS	Operating Torque, N.m	Flow Coefficient, Kv
DN8	5,6	8,6
DN12	5,6	8,6
DN15	9,6	10,3
DN20	15,8	30,1
DN25	20,3	52
DN32	26,6	86
DN40	33,9	129
DN50	37,3	215
DN65	96	344
DN80	136	516

Note: Operating torques given for RPTFE seats, maximum differential pressure. The normal service factor to be applied to these torques for actuator sizing is 1.2, but may be more or less depending upon operating conditions. Operating torques are also highly dependent upon seat material, and differential pressure across the closed ball. Consult the Marwin Ball Valve Actuator Sizing Program for operating torques and service factors for different materials, fluids, and operating conditions.



MD09004

Dimensions, Inches												
Valve Size	9000F Series											
Inches	Actuator	A	B	C	D	E	F	G	H	J	K	Wt (lbs)
1/4"	UT-0A-DA	2.14	5.16	4.3	1.8	0.60	0.60	0.60	2.00	1.77	0.9	7.0
	UT-0-SR		6.13	5.5	2.8					2.74	1.6	8.4
3/8"	UT-0-DA	2.57	6.24	5.5	2.8	0.686	0.71	0.71	2.00	2.74	1.6	8.6
	UT-1-SR		6.67	6.4	3.2					3.17	1.8	9.7
1/2"	UT-0-DA	3.05	6.26	5.5	2.8	0.88	0.73	0.73	2.00	2.74	1.6	8.6
	UT-2-SR		7.34	8.2	3.7					3.82	2.1	13.2
3/4"	UT-0-DA	3.49	6.94	6.4	3.2	1.07	0.98	0.98	2.00	3.17	1.8	10.5
	UT-1-SR		8.04	9.4	4.2					4.27	2.3	16.8
1"	N/A	4.03				1.26	1.12	1.12				
1-1/4"	N/A	4.29				1.37	1.50	1.50				
1-1/2"	N/A	4.94				1.84	1.81	1.81				
2"	N/A	4.94				1.84	1.81	1.81				
2-1/2"	N/A	6.49				2.35	2.24	2.24				
3"	UT-3.5-DA	7.46	13.02	12.9	5.4	2.61	2.77	2.77	3.50	5.57	2.9	43.0
	UT-5-SR		16.03	20.6	7.4					8.58	3.9	79.1

How to Order							
Valve Series	Body Material	Trim Material	Port Design	Packing	Seat	End Connections	Valve Size
99	2 = Carbon Steel	3 = 316 Stainless Steel	F = Full Port	T = PTFE	R = RPTFE	S = Threaded (FNPT)	025
	3 = Stainless Steel						038
							050
							075
							100
							125
							150
							200
							250
							300

Sample Ordering Schematic

99	3	3	F	T	R	S	050
----	---	---	---	---	---	---	-----

Marwin Valve

 A Division of Richards Industrials, 3170 Wasson Road, Cincinnati, OH 45209
 toll free. 800.543.7311, local. 513.533.5600, fax. 513.871.0105
www.marwinvalve.com